

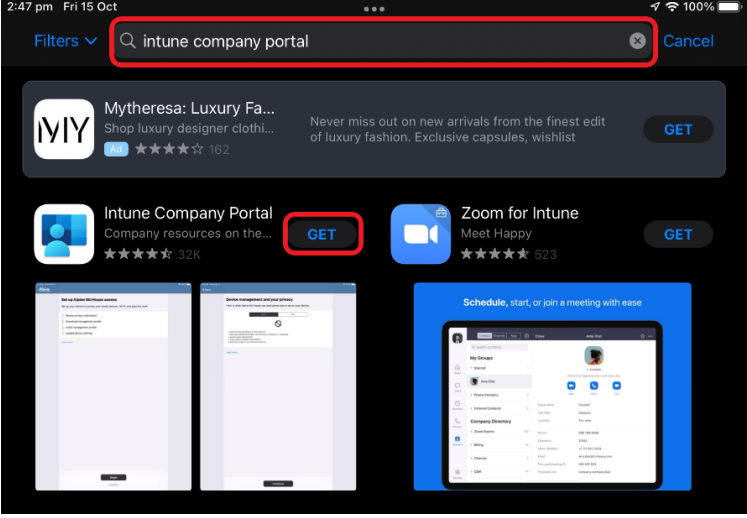
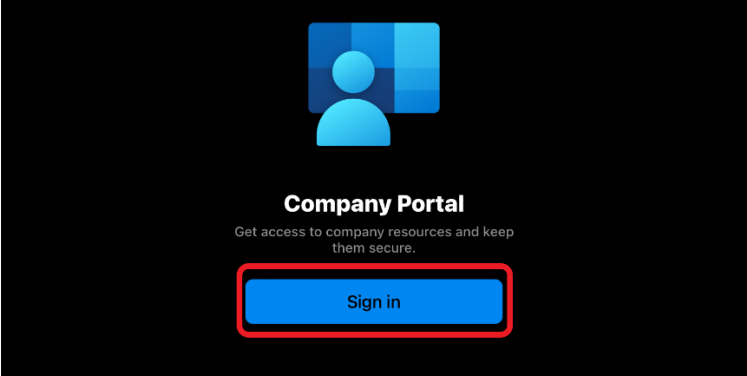
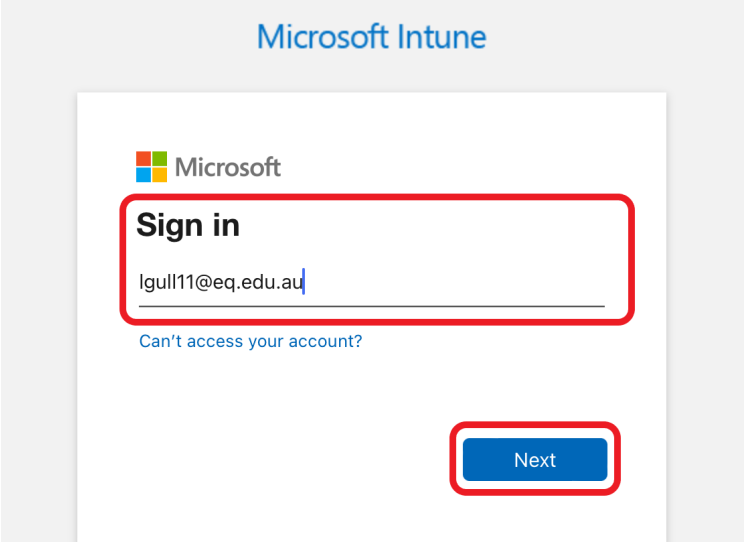


## Cavendish Road State High School

# This is a step-by-step guide on how to onboard your BYO iPad at school.

Follow the steps in this guide, the images are a reference, but actual text on your device may differ.

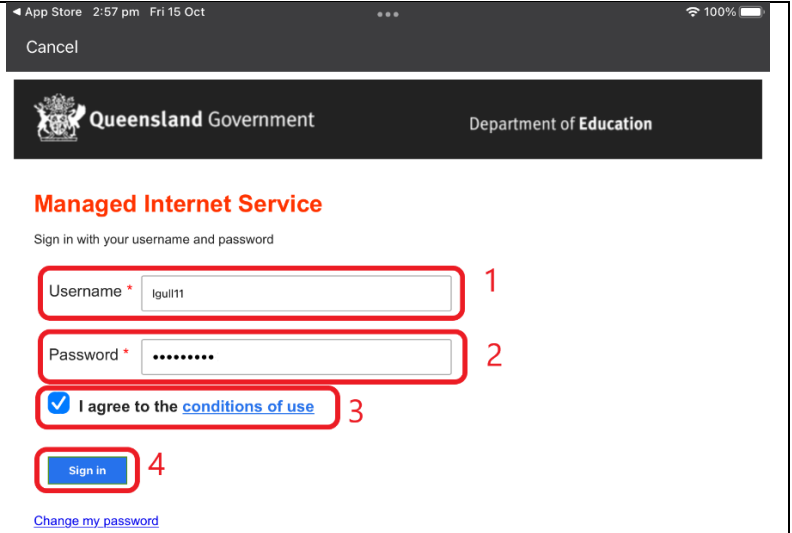
**Please note** that this guide was created for iOS 15, so if you are running a different version of iOS, your experience may differ.

<ol style="list-style-type: none"><li>1. Open the App store and search for "Intune Company Portal".</li><li>2. When the search completes, find the app and tap "Get".</li><li>3. When the download completes, open the app.</li></ol>	 <p>A screenshot of an iPhone's App Store search results page. The search bar at the top contains the text "intune company portal" and is highlighted with a red box. Below the search bar, several app cards are visible. The card for "Intune Company Portal" is highlighted with a red box around its "GET" button. Other apps shown include "Mytheresa: Luxury Fa..." and "Zoom for Intune".</p>
<ol style="list-style-type: none"><li>4. When the app opens, tap "Sign In".</li></ol>	 <p>A screenshot of the Intune Company Portal app's sign-in screen. The background is dark with a blue icon of a person. The text "Company Portal" is centered, followed by the subtitle "Get access to company resources and keep them secure." Below this, a blue "Sign in" button is highlighted with a red box.</p>
<ol style="list-style-type: none"><li>5. Enter your school email address in the sign-in field, then tap "Next".</li></ol>	 <p>A screenshot of the Microsoft Intune sign-in page. The Microsoft logo is at the top left. Below it, the text "Sign in" is displayed. A text input field contains the email address "lgull11@eq.edu.au" and is highlighted with a red box. Below the input field, there is a link that says "Can't access your account?". At the bottom right, a blue "Next" button is highlighted with a red box.</p>

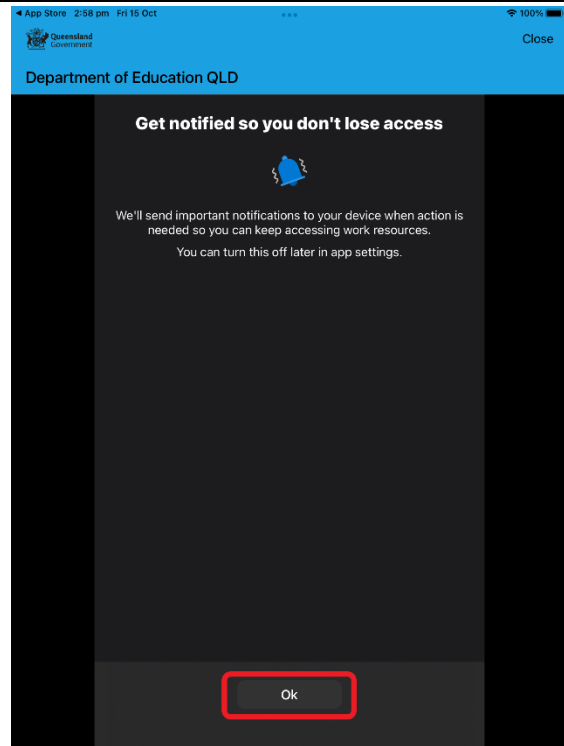


# Cavendish Road State High School

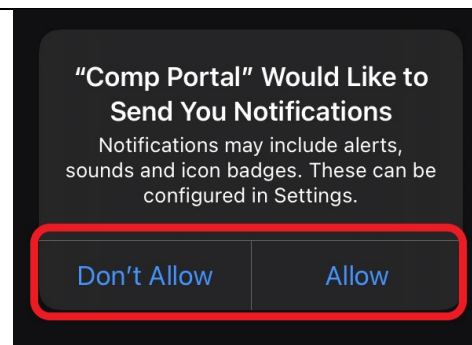
6. Your username should autofill, but if it doesn't, enter it here.
7. Enter your school password.
8. Check the box to agree to the conditions of use.
9. Tap "Sign In".



10. Tap "Okay" on this screen and the following popup should appear.



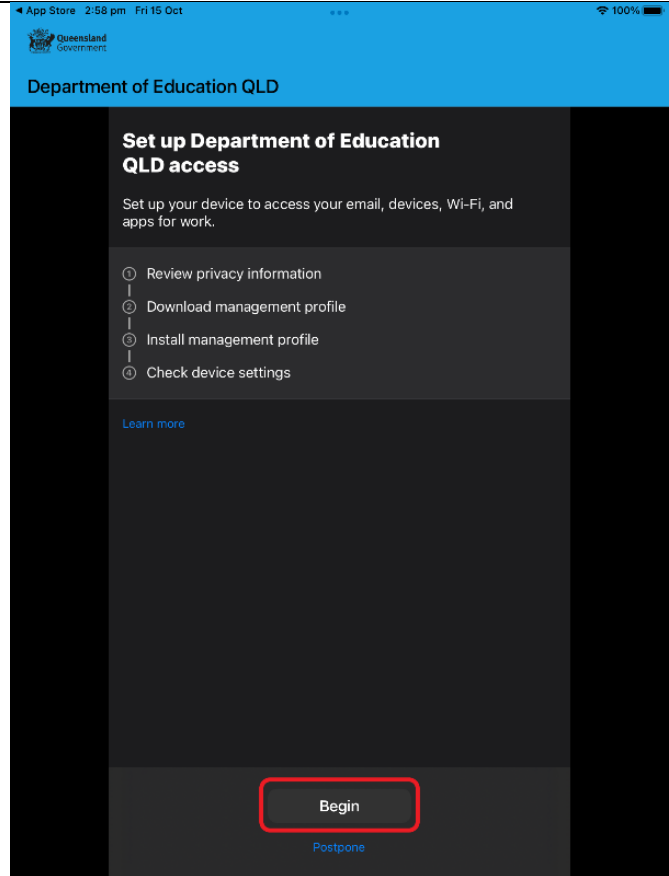
11. Either Allow or Don't Allow notifications. They are recommended, but not required.



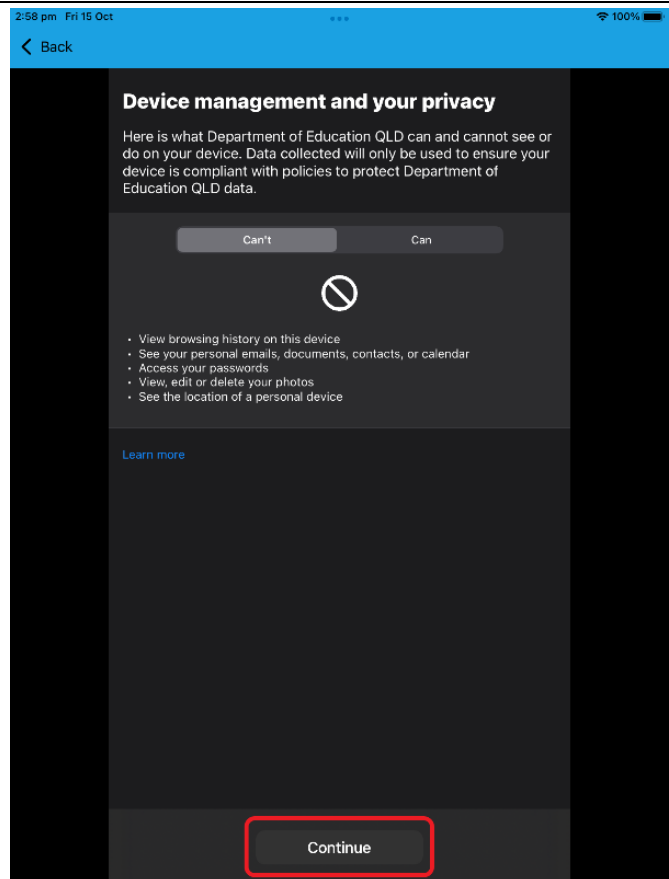


# Cavendish Road State High School

12. Tap “Begin” on this screen. This will start the joining process to link your device to your account at school.



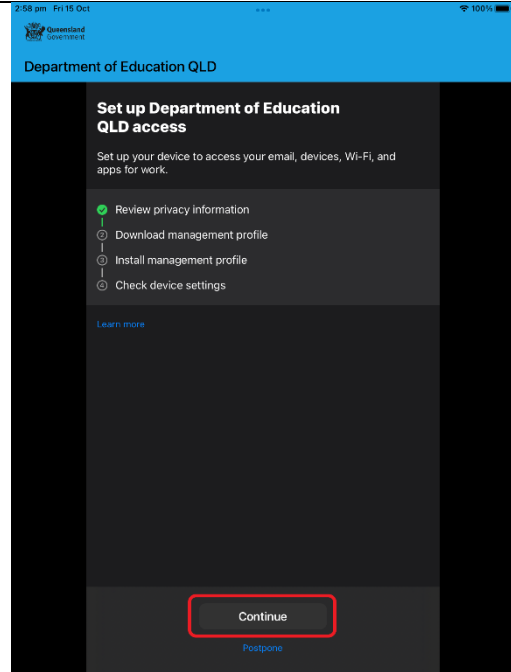
13. This screen details what the management profile can and cannot do on your device. Tap “Continue”.



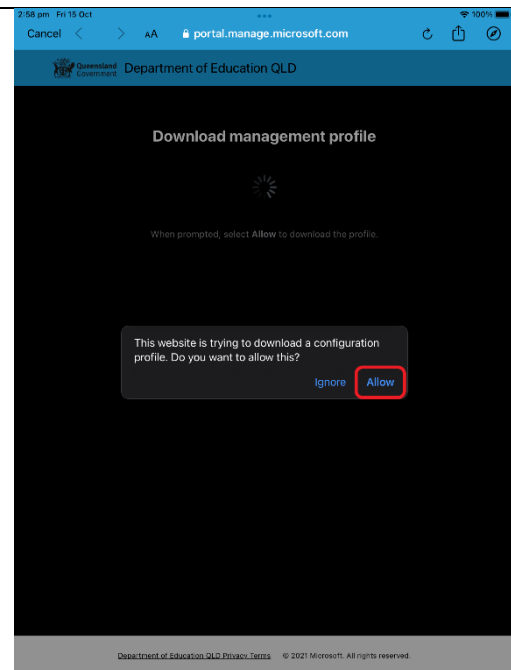


# Cavendish Road State High School

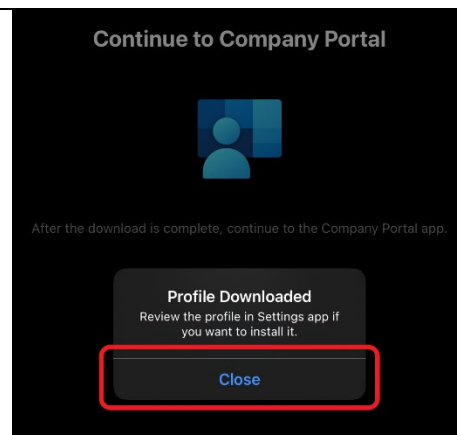
14. Tap "Continue".



15. The app will need permission to download the management profile. Tap "Allow" to begin the download.



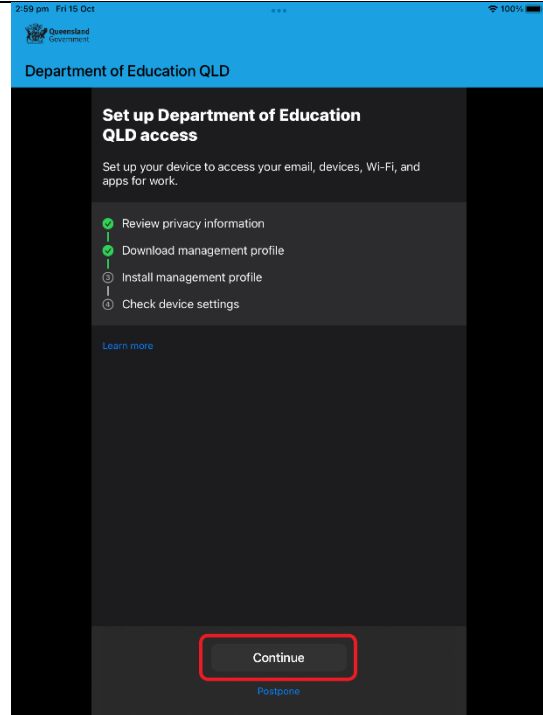
16. Once the download has completed, tap "Close".



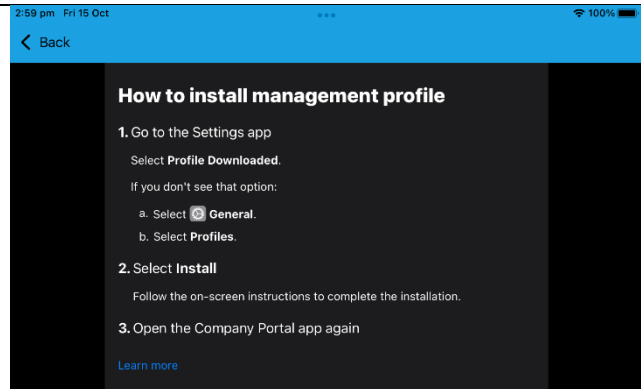


# Cavendish Road State High School

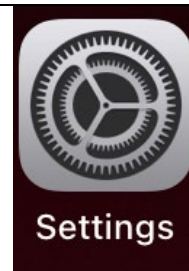
17. Tap "Continue".



18. This page shows instructions on how to install the profile. Press the iPad's home button (iPad 6<sup>th</sup>-8<sup>th</sup> Generation) or swipe up from the bottom of the screen (iPad Air/Pro) to minimise the app.



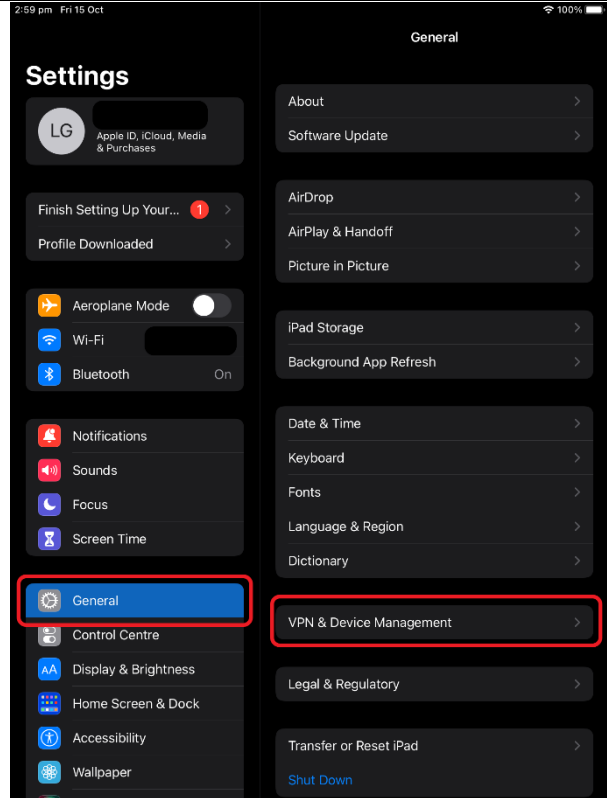
19. Find and open the Settings app.



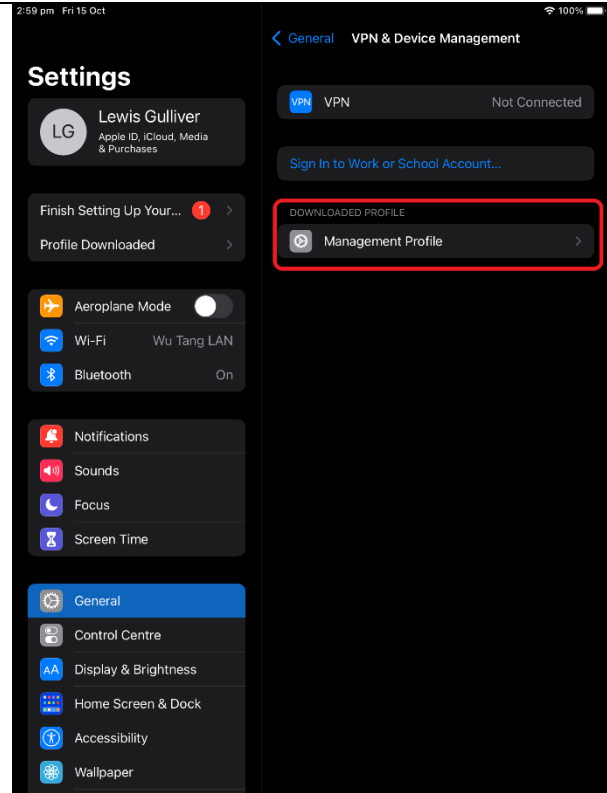


## Cavendish Road State High School

20. In the settings app, Tap the “General” tab.
21. In General, tap on “VPN & Device Management”.

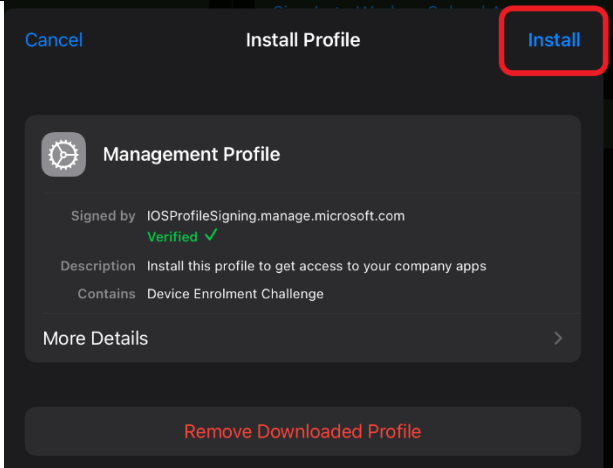
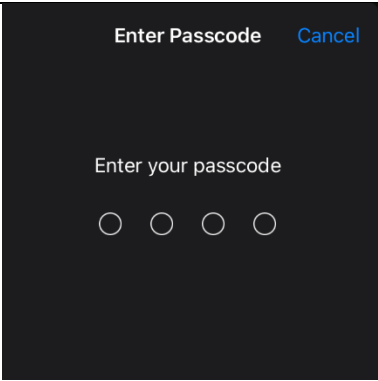
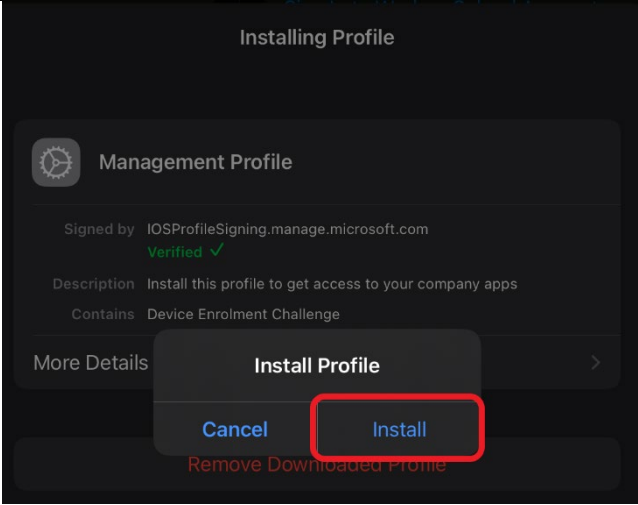
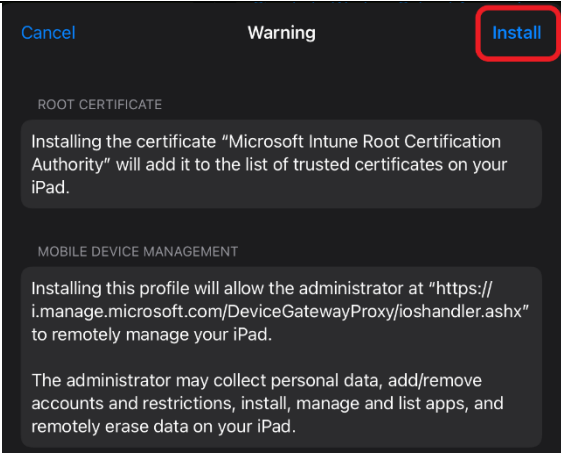


22. In “VPN & Device Management”, tap “Management Profile”.





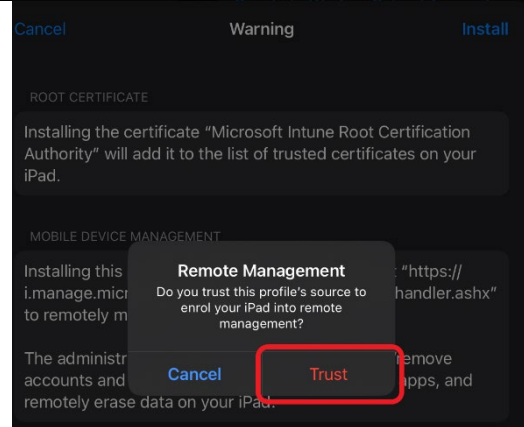
# Cavendish Road State High School

<p>23. Tap "Install" to begin installation of the profile.</p>	
<p>24. Enter your iPads passcode/password is prompted.</p>	
<p>25. Tap "Install" on the popup.</p>	
<p>26. Tap "Install" again.</p>	

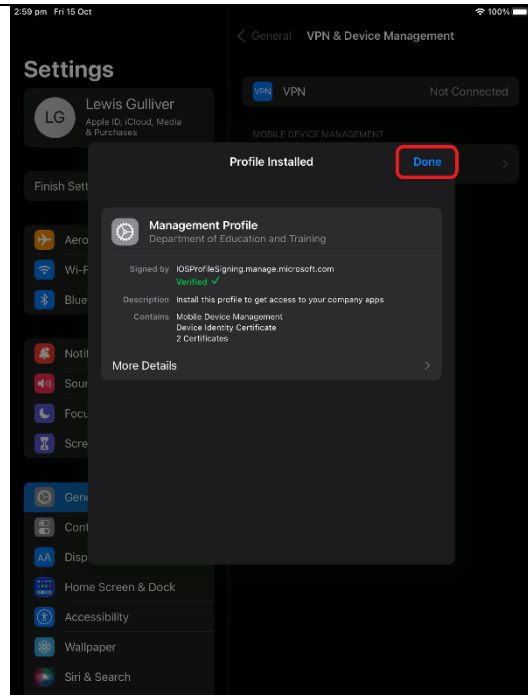


# Cavendish Road State High School

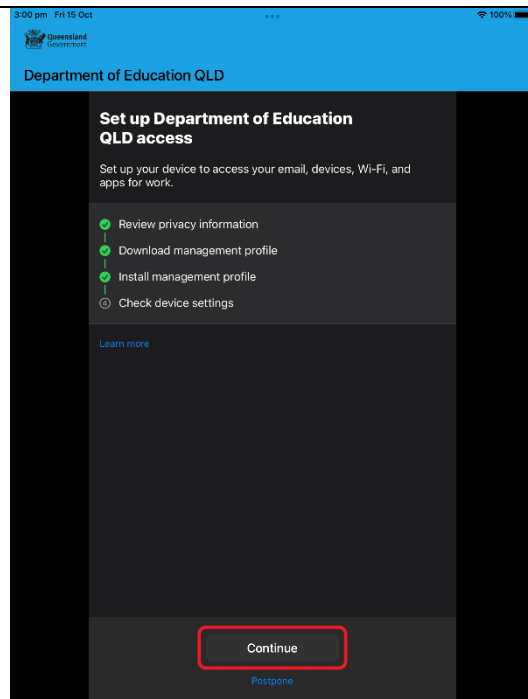
27. Tap to trust the remote management profile.



28. The management profile is now installed. Tap "Done" and press the home button/swipe up to minimise the settings app.  
29. Reopen the Company Portal app.



30. Once back in the Company Portal, the app will automatically detect the installed profile. Tap "Continue".

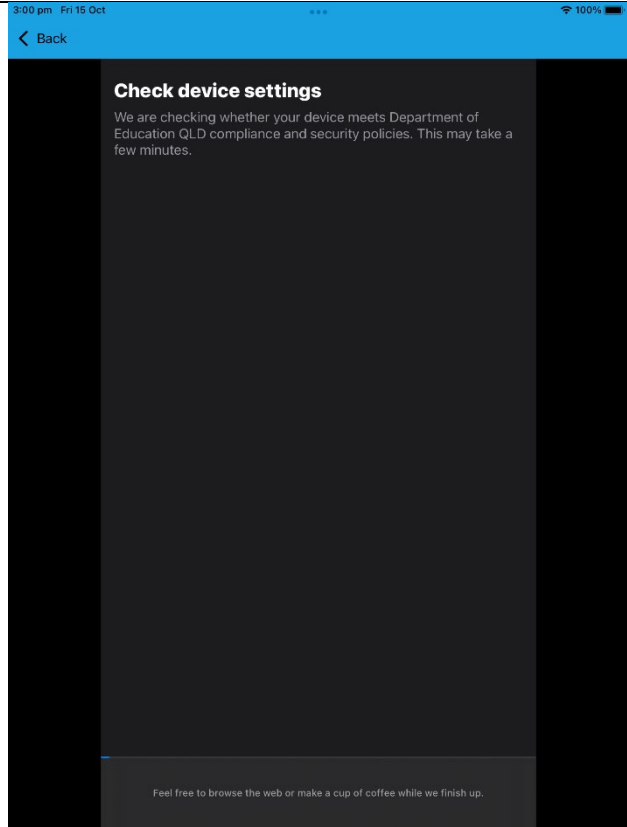






# Cavendish Road State High School

31. The Company Portal will now check your device's settings for compatibility with the school network. This may take up to a few minutes.



32. Once the check completes, tap "Done".  
33. Your device is now registered to your school account and will have access to the network at school.

